

PATTAYA'S MOST EXCLUSIVE DESTINATION -
THE FIRST WELLNESS & LONGEVITY RESIDENCE

ZENITH II

P A T T A Y A



LIVE BETTER.
LIVE LONGER.
LIVE ZENITH.



COMFORT.
BALANCE.
EVERYDAY.



computer generated image



computer generated image



WELLNESS THAT FLOWS AROUND YOU

Pattaya's first residential project designed entirely around wellness and longevity, where space, privacy, and quality of life define the experience. Housing a complete wellness ecosystem including lobby, concierge, co-working spaces, fitness, Onsen, a wellness & longevity studio, health-oriented dining, and six-storey facilities building.



ELEVATED EVERYDAY LIVING TO ELEVATED LIFE OF WELLNESS

A comprehensive suite of wellness facilities supports daily health and long-term vitality, from fitness and recovery to Onsen and longevity services, all seamlessly integrated into everyday living. Advanced security systems, controlled access, and 24-hour professional management ensure privacy, safety, and peace of mind, allowing residents to focus fully on living well in a calm and protected environment.



*computer generated image

Elevating Lifestyle and Wellness



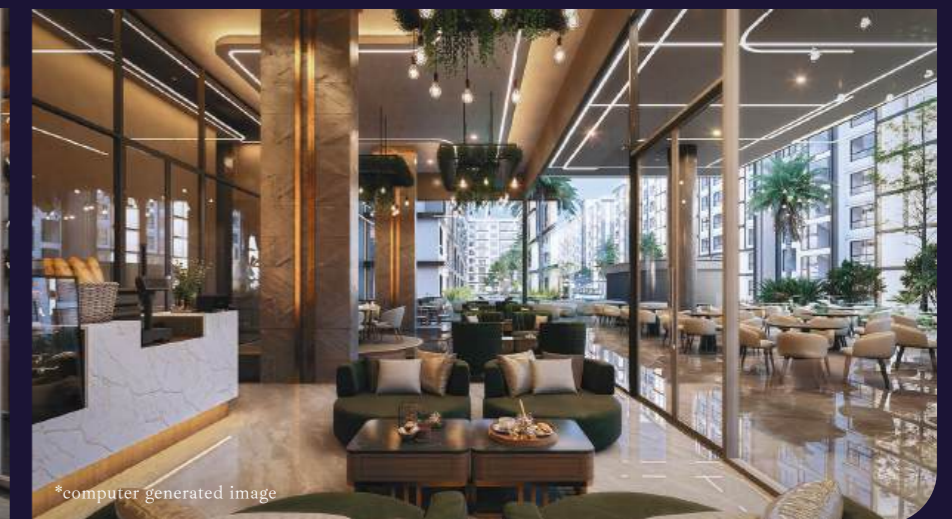
*computer generated image

Lobby



*computer generated image

Lounge



*computer generated image

Living Area

ZENITH PATTAYA II
WELLNESS & LONGEVITY HUB
A Sanctuary for Modern Living

MASTER PLAN

1st Floor - Arrival & Lifestyle
(The Grand Atrium)

- Main Lobby
- Signature Healthy Restaurant
- Garden Terrace Dining
- Rental Office

2nd Floor - Restore & Revitalize
(Wellness & Longevity)

- Wellness & Longevity Studio with Open Balcony
- Juristic Office
- Mailbox
- Private Pilates

3rd Floor - Focus & Flow
(The Focus Lounge)

- Generous Co-Working Lounge
- Open-Air Co-Working Terrace
- Private Meeting Suites
- Horizon Co-Working Bar

4th Floor - Strength & Movement
(Zenith Fitness - Strength | Mobility | Longevity)

- Fully Equipped TechnoGym Fitness Center
- Yoga & Mobility Studio

5th Floor - Recover & Unwind
(Zenith Onsen)

- Infinity Pool & Jacuzzi
- Relaxation Garden
- Meditation Zone
- Cold Plunge Pool
- Japanese Onsen
- Hot Sauna
- Steam Room

6th Floor (Rooftop) - Calm & Elevation
(The Horizon)

- Elevated Onsen Pools
- Relaxing Zen Gardens
- Relaxing View Point Pond
- Horizon Onsen Bar



1st FLOOR PLAN

SCALE

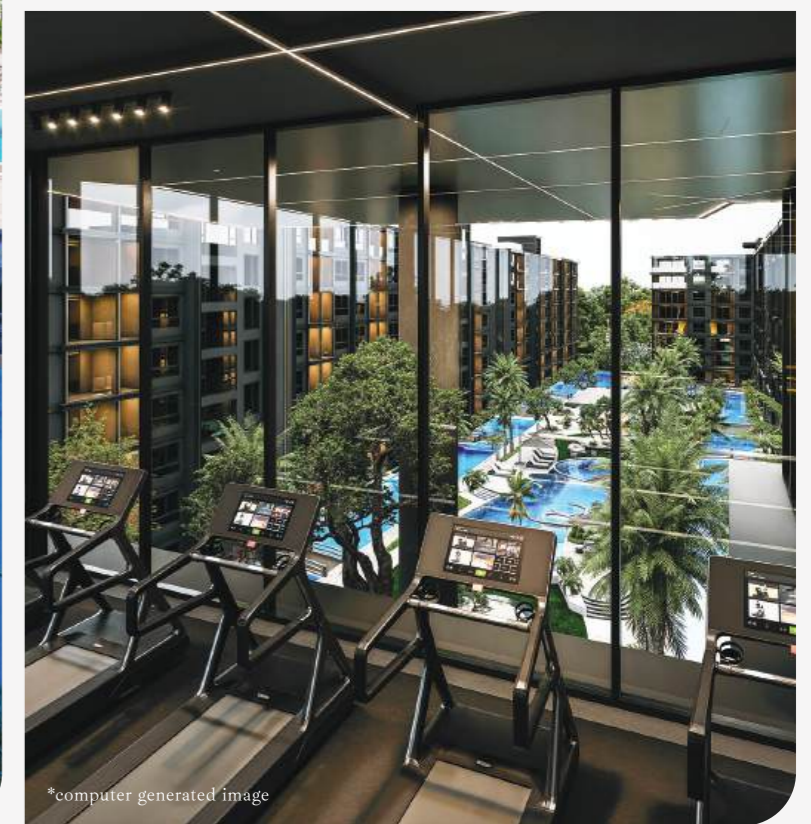
1:600

A SIGNATURE COLLECTION OF WELLNESS

1. First in Pattaya – Zenith Pattaya II is the first project in the city fully designed around wellness and longevity as a living concept, not a theme.
2. Dedicated Facilities Building – A rare six-storey standalone facilities building at the entrance creates a true lifestyle hub and strong project identity.
3. Exceptional Space & Views – Generous wide distances between buildings and long landscaped courtyards provide open views and natural light for most units.
4. Homes for Real Living – Larger unit sizes and practical layouts attract long-term residents seeking quality of life, not short-term use.
5. Prime Urban Location with Privacy – Centrally located yet surrounded by low-rise villa neighborhoods, offering both convenience and tranquility.

Longevity Service

24-Hour Professional Security
Complimentary Shuttle Service
to Thappraya Road
CCTV Coverage across the
entire development
High-Speed Fibre Optic
Internet





1B-A
34 sq.m.



1B-B
54 sq.m.

REFINED SPACES FOR RESTFUL LIVING

Wellness begins at home. Each residence features generous proportions, efficient layouts, and a clear separation between living, resting, and functional spaces, allowing balance daily life. Large windows draw in natural light while framing open views of greenery and water, conveying comfort and connection to the surrounding tropical landscape.

Materials are selected for durability, comfort, and a refined, timeless feel, with soft color palettes that promote calm and reduce visual noise suited for everyday use for quality rest and long-term well-being.

The result is a home designed not just for short stays, but for permanent living where space, light, and simplicity work together to support a healthier lifestyle.

The Art of Restful Living



*computer generated image



*computer generated image



*computer generated image

SANCTUARY FOR BOTH MIND & BODY

Zenith Pattaya II is conceived as a private sanctuary for both mind and body. Soft natural light, quiet spatial flow, and carefully considered proportions create an atmosphere that encourages rest and mental clarity. Free from visual excess, the interiors offer a sense of calm that supports relaxation, reflection, and everyday recovery within the comfort of home.



2B-B
68 sq.m.



2B-C
72 sq.m.

LIVING SPACES THAT SUPPORT WELL-BEING

The two-bedroom residences are designed to support everyday comfort and balance, offering generous space, natural light, and clear separation between living and resting areas. Thoughtful layouts allow for privacy, flexibility, and calm, creating a home that adapts easily to daily life while supporting long-term well-being.

The Art of Restful Living



*computer generated image



*computer generated image



*computer generated image

WELLNESS THAT YOU CAN FEEL

Wellness in the two-bedroom residences is expressed through light, space, and quiet comfort. Natural airflow, soft daylight, and well-proportioned rooms create an environment that feels calm and restorative, supporting both physical comfort and mental ease throughout everyday life.



3B-A
76 sq.m.



3B-B
160 sq.m.

LIVING SPACES MADE FOR REAL WELLNESS

The three-bedroom residences are designed for those who value space, privacy, and a higher level of everyday comfort. With generous proportions and clearly defined living, resting, and private areas, the layout supports a balanced lifestyle that accommodates family life, work, and relaxation with ease. Abundant natural light and open circulation create an environment that feels calm, healthy, and deeply livable over the long term.

An Environment That Feels Right



*computer generated image



*computer generated image

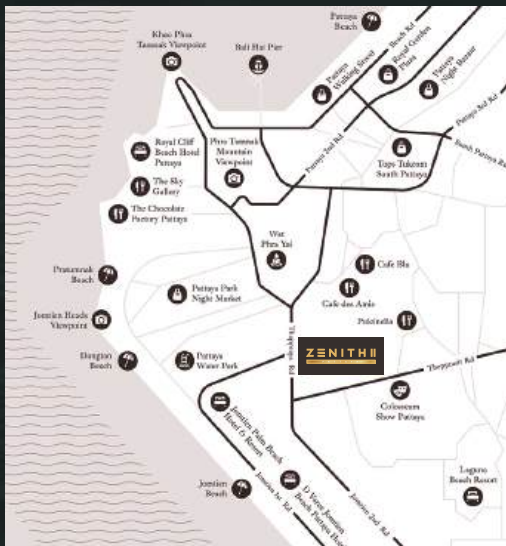


*computer generated image

DESIGNED FOR RESTFUL MOMENTS

Each bedroom is positioned to provide privacy, quiet, and a sense of retreat from daily activity. Soft natural light, calm proportions, and thoughtful separation from living areas support deeper rest and relaxation. The result is a home environment where restorative moments come naturally, day or night.

PATTAYA'S FIRST WELLNESS, AND LONGEVITY RESIDENCE



WWW.ZENITHPATTAYA.COM

Zenith Pattaya II, Soi 15, Thappraya Road, Pattaya City, Chonburi 20150

Construction plans, delivery periods or project details are subject to change and the Company will endeavor to proceed within the specified timeframe, depending on various factors such as weather conditions, governmental conditions or other unexpected events. The Company reserves the right to change the information in the sales document without prior notice. The computer generated images are used only as part of the advertisement and description of the usage pattern. The information, images or simulation images appearing in the documents and public relations are for preliminary information only. They are subject to change without prior notice, which may be due to technical limitations or legal requirements.